

Capital Transmission has invested in :em engineering methods AG



Founded in 2002 and based in Darmstadt, Germany, :em engineering methods AG is an independent IT and business consulting company for the digital transformation of the engineering sector in the areas of “Product Lifecycle

Management”, “Model Based Engineering” and “Application Lifecycle Management”. The company also offers ReqMan, an in-house developed “Requirements Management Software”. In 2024, the company exceeded 110 employees. Capital Transmission invested alongside its founders, management, Patrimonium, and Wille to support :em in its growth strategy, both organically and through acquisitions.



Mechanical engineering



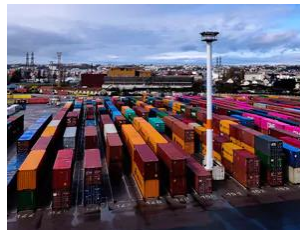
Plant construction



Railway technology



Automobile manufacturers



Automotive suppliers



Aerospace

About Capital Transmission

Capital Transmission SA is an investment company founded in 2008 and subsidiary of the BCGE group.

Our objective is to provide financial support to companies and entrepreneurs via equity and quasi-equity contributions ranging from 2 to 15m CHF. Based on a balanced risk and long-term approach Capital Transmission invests in mature companies with sound profitability and a talented management in place.

With a presence in both Geneva and Zürich, we focus on Switzerland and Europe. The companies we invest in usually generate sales between 5-100m CHF. Thanks to our structure, we can provide tailored-made financing solutions to support growth initiatives (build-ups, expansion etc.).

We are used to work with family-owned businesses and have established ourselves in the past fifteen years as the go-to partner in terms of succession solutions for family businesses, spin-offs, MBI, MBO and OBO.